

Konecranes RMG:
a concept,
not just a crane



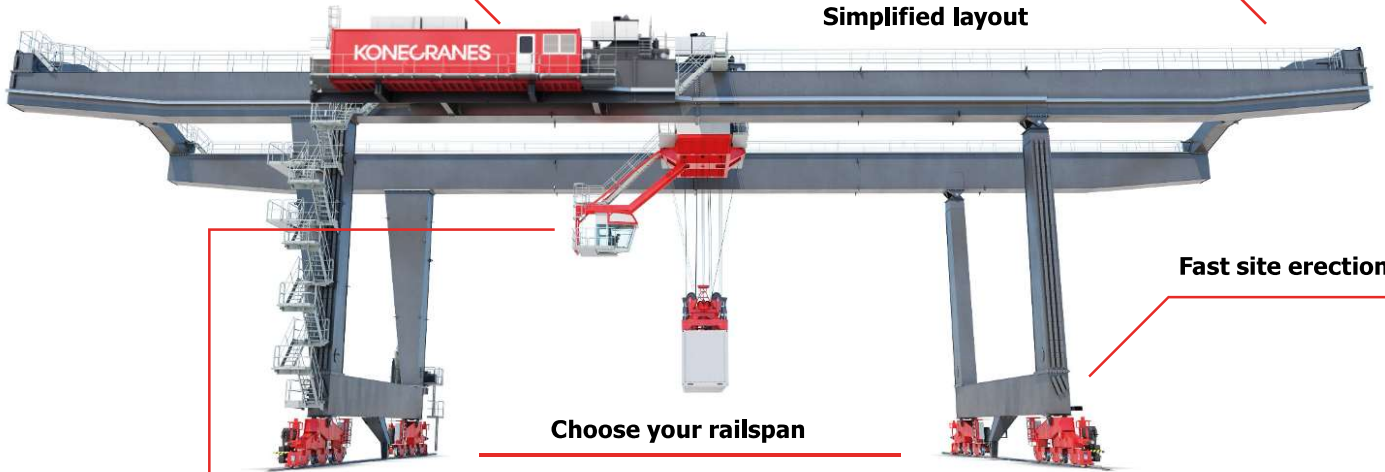
Modular

With variants & options + customer-specific features

**E-room and transformer room
combined in one container space**

Choose your operating width

Simplified layout



Fast site erection

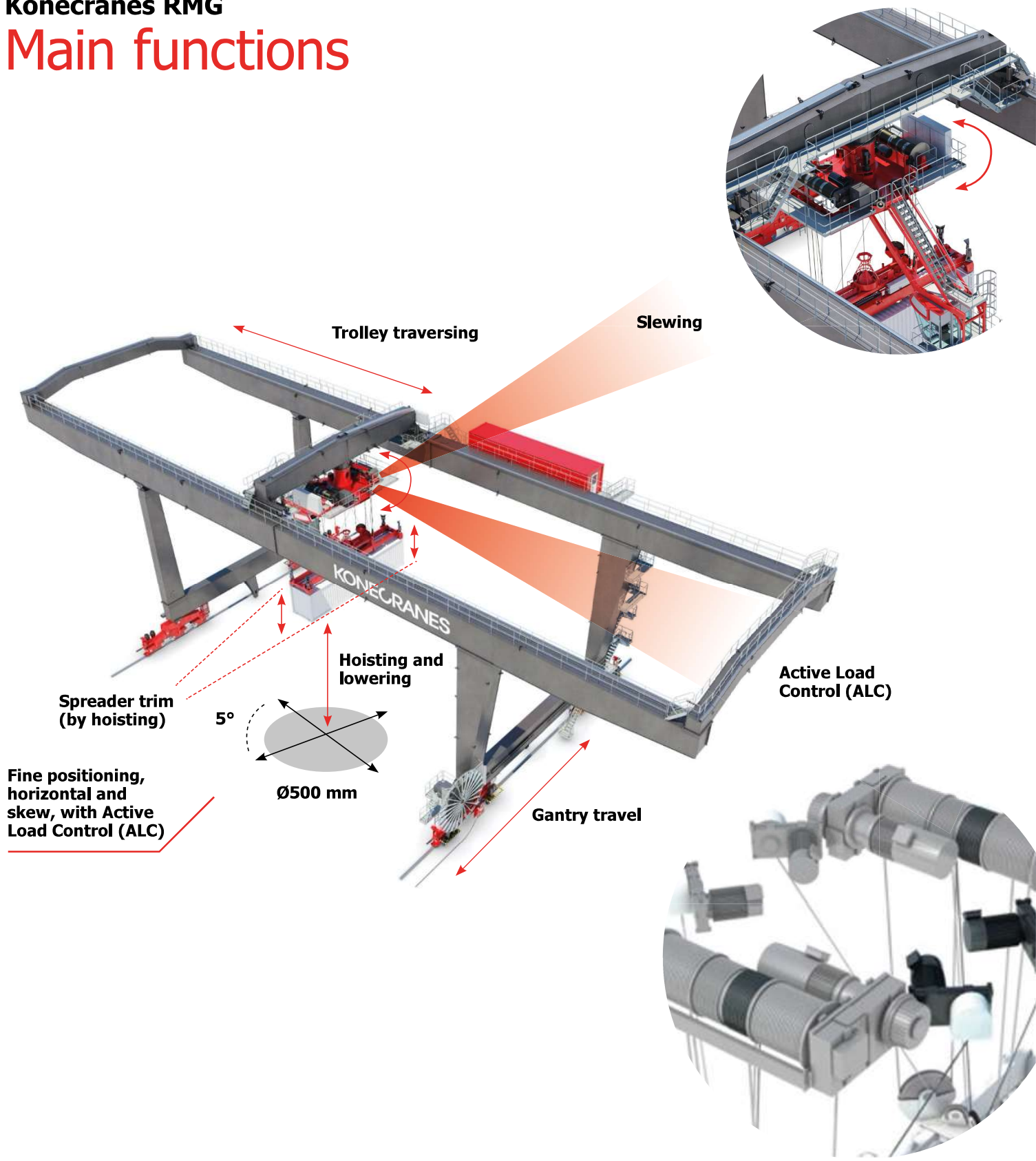
Choose your railspan



**Cabin
in position optimized for
intermodal**

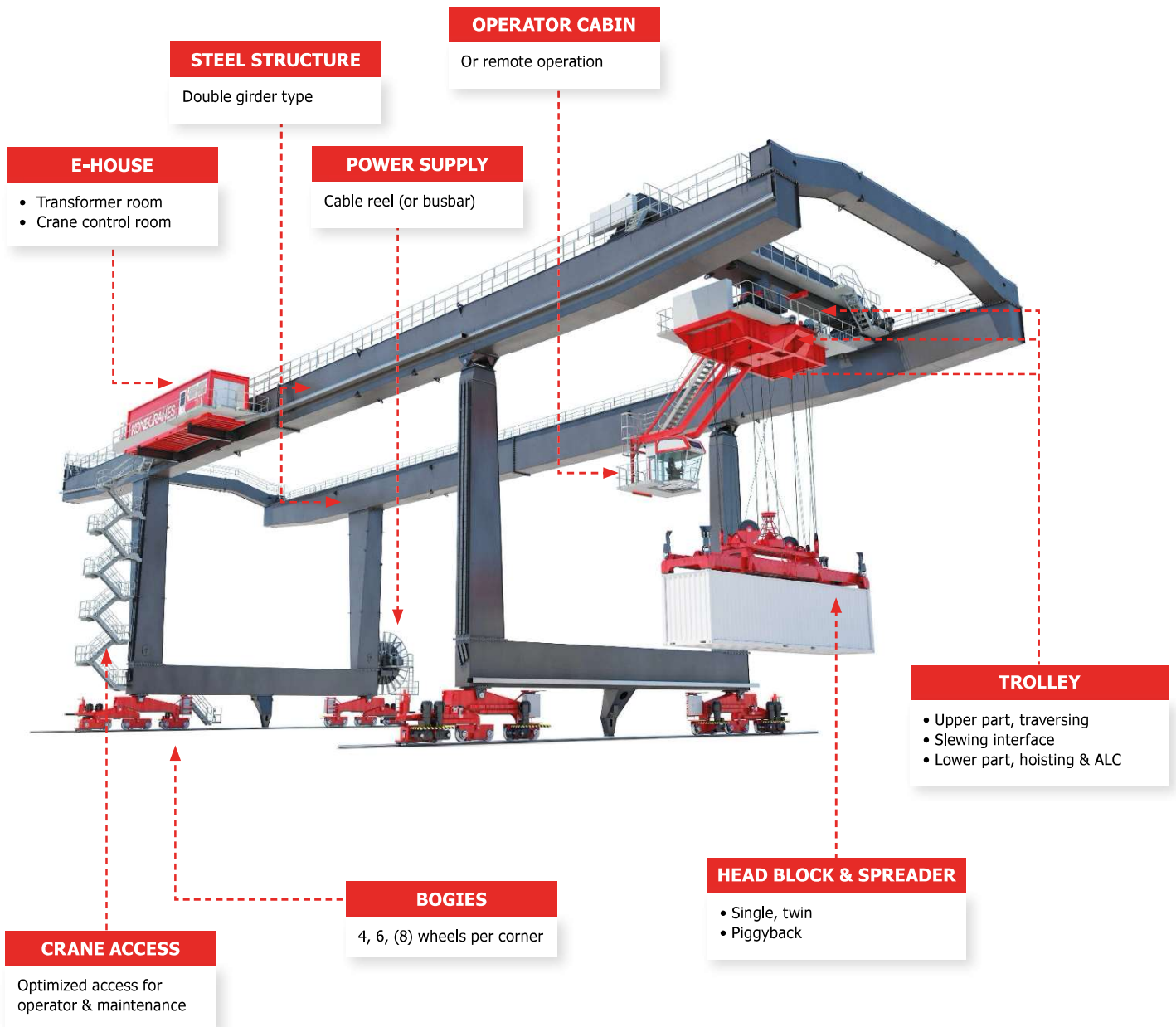
(Best view to rails)

Konecranes RMG Main functions

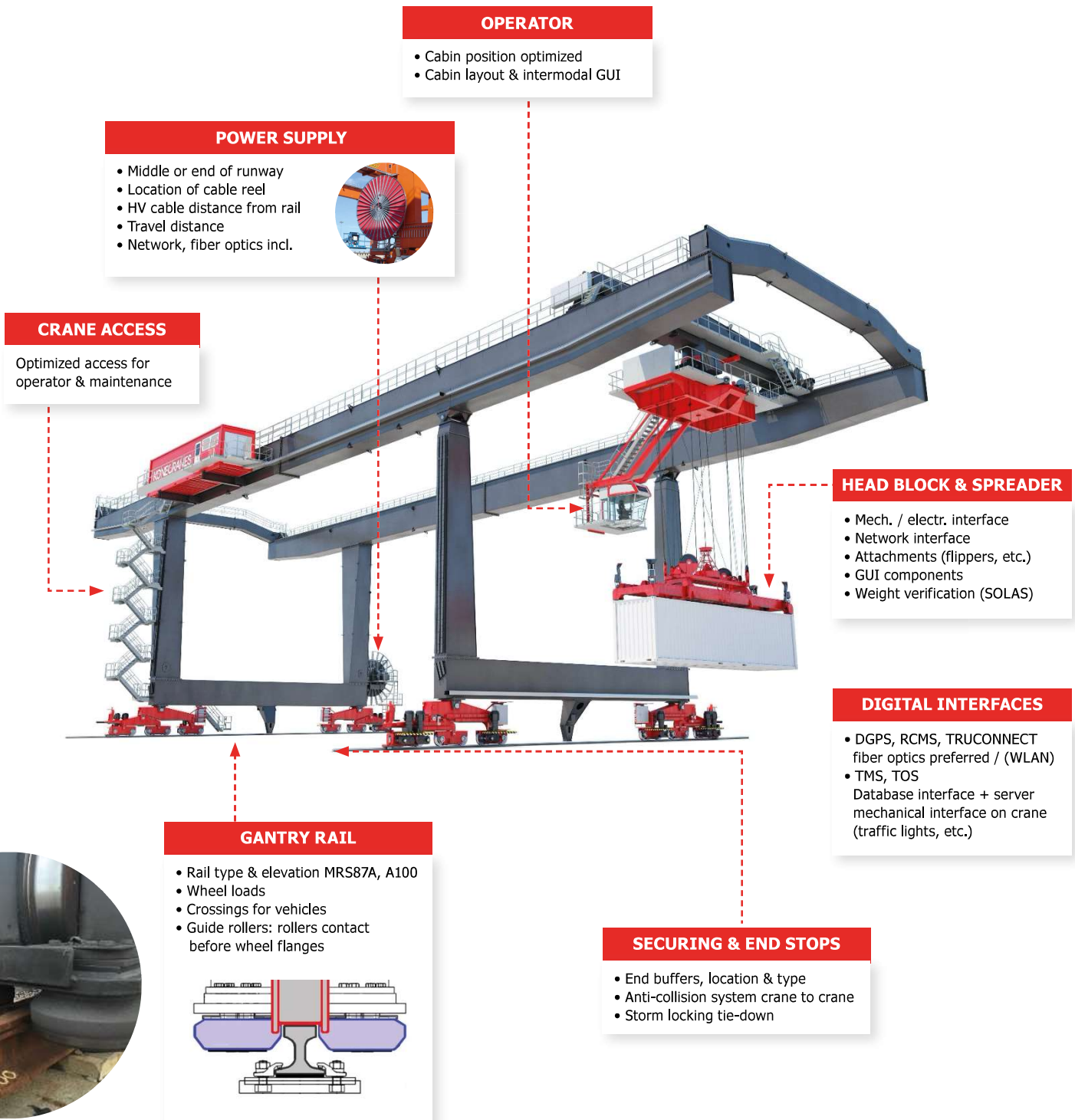


Konecranes RMG

Main modules



Konecranes RMG Main interfaces



OPERATOR

- Cabin position optimized
- Cabin layout & intermodal GUI

POWER SUPPLY

- Middle or end of runway
- Location of cable reel
- HV cable distance from rail
- Travel distance
- Network, fiber optics incl.



CRANE ACCESS

Optimized access for operator & maintenance

HEAD BLOCK & SPREADER

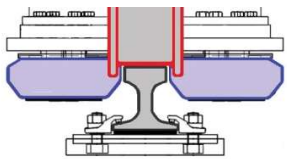
- Mech. / electr. interface
- Network interface
- Attachments (flippers, etc.)
- GUI components
- Weight verification (SOLAS)

DIGITAL INTERFACES

- DGPS, RCMS, TRUCONNECT fiber optics preferred / (WLAN)
- TMS, TOS Database interface + server mechanical interface on crane (traffic lights, etc.)

GANTRY RAIL

- Rail type & elevation MRS87A, A100
- Wheel loads
- Crossings for vehicles
- Guide rollers: rollers contact before wheel flanges



SECURING & END STOPS

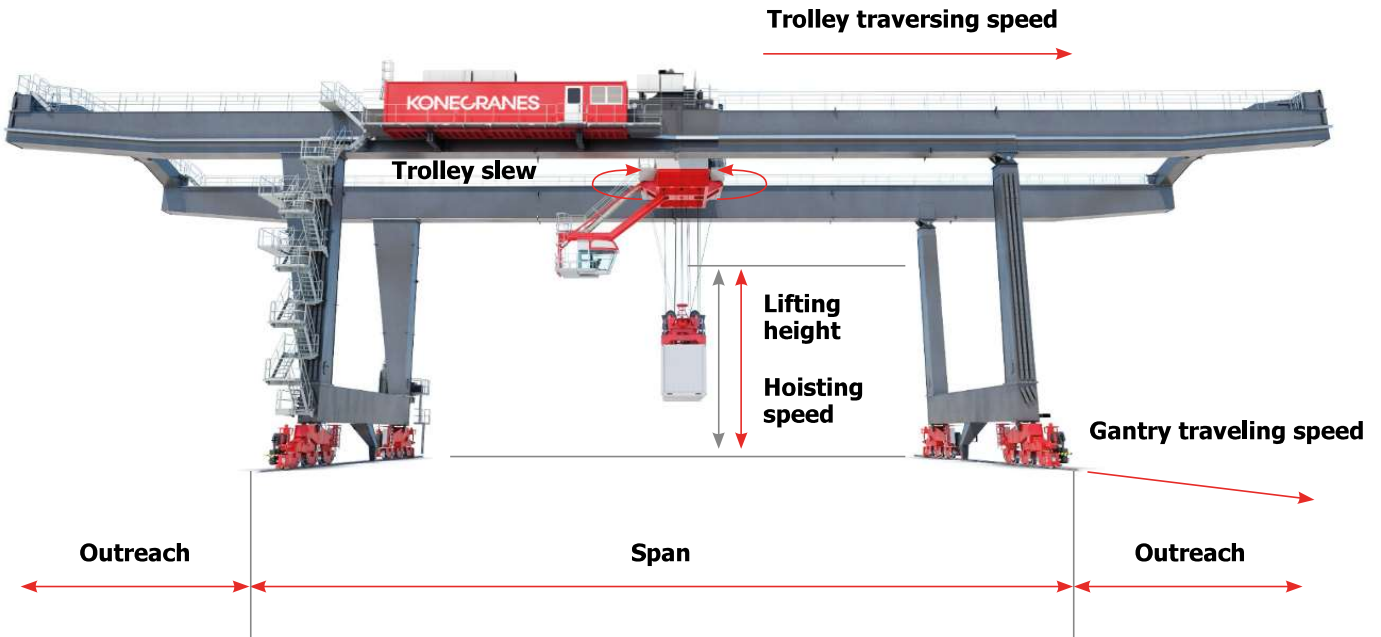
- End buffers, location & type
- Anti-collision system crane to crane
- Storm locking tie-down



Konecranes RMG

Main parameters

With Konecranes RMG and RTG cranes you can start with manual operation and then get on the path to automation as you desire. You can add Smart Features as retrofits, all the way up to full automation.

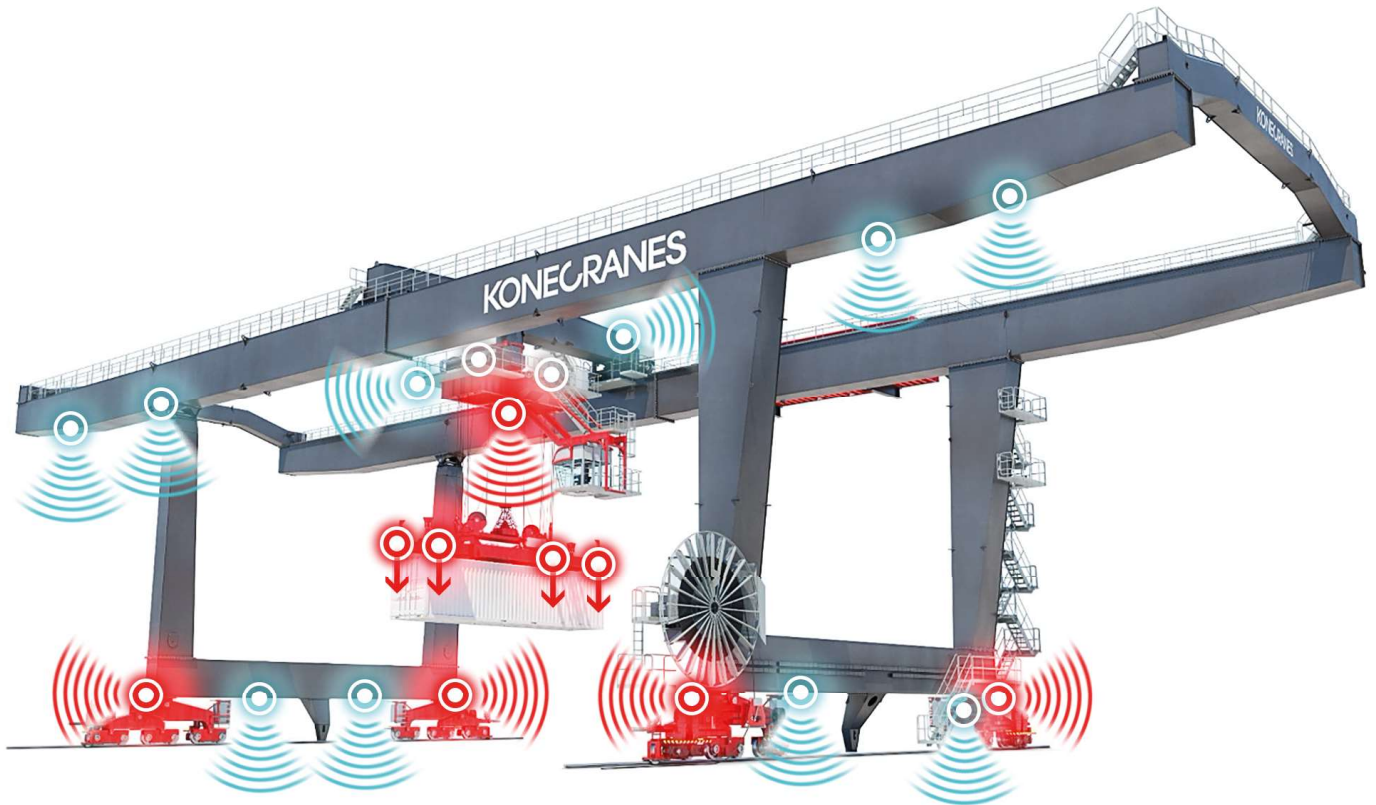


| | | | |
|---------------------------------|--|---|---|
| Span | Max. 48 000 | Hoisting speed | 30 - 45 m/min (loaded) 60 - 90 m/min (empty) |
| Outreaches (cantilevers) | Max. 2 x 18 000 | Trolley slewing speed /slewing angle | 1,6 - 2,0 rpm / 310 ° Rotator in spreader |
| Lifting height | Max. 9 000 (1 over 5) | Trolley traversing speed | 120 - 150 m/min |
| Capacity | 40 - 50 t (STD) Max. 45 t (STD), with grapple arms Max. 65 t (HD), twin-lift | Gantry traveling speed | 120 - 150 m/min |

KONECRANES

Graphical user interface (GUI)

Clearest view in all directions



A/V component locations

- PTZ camera in the trolley
- 4 fixed cameras in the spreader
- 4 fixed cameras on the bogies
- Microphone in the operator's cabin
- Loudspeaker on the trolley

+

Multiple optional cameras



Smarter cabin

Intermodal automation

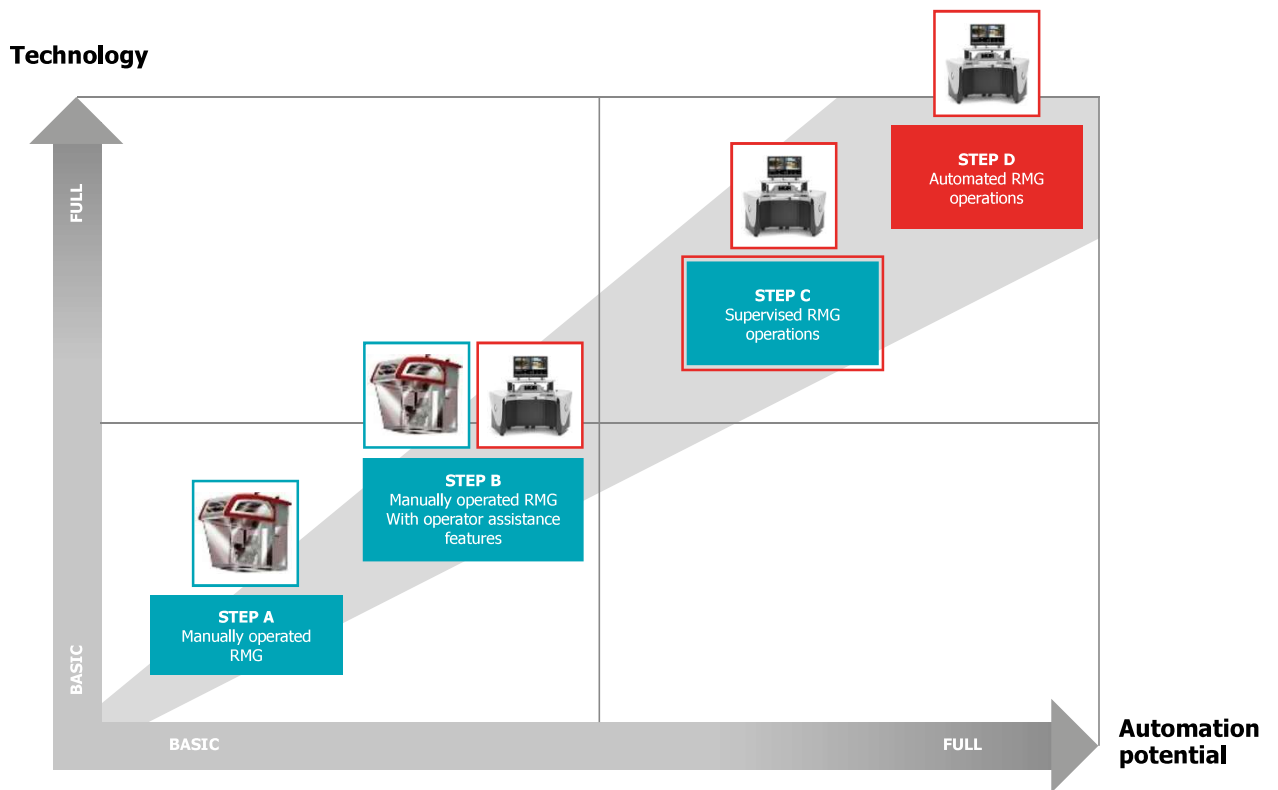
Remote Operating Station (ROS)

- 38" wide screen
- 10" touchpanel
- 2 joysticks
- Headset
- Adjustable height for table and screen



Intermodal automation Growth path

The Konecranes RMG can be gradually upgraded from a manual crane to having advanced operator assistance features and ultimately up to full ARMG with the operator intervening only in exceptional situations.



Our offering

For intermodal terminal evolution

Consulting

- Terminal design (simulation)
- Terminal conversion
- Implementation support (emulation)

Equipment

- RTG, ARTG, RMG and ARMG cranes
- Horizontal transport
- Lift trucks
- Automation growth path included
- Full automation
- All-electric

Software

- Terminal Operating System (TOS)
- Equipment Control System (ECS)
- Remote operations
- Access control
- IT maintenance and support

Service

- Field service and spare parts
- Retrofits and upgrades
- Digital services
e.g. remote monitoring of equipment and operating data (telematics)
- Optimization support
(performance improvement)
- Consulting

Konecranes is a world-leading group of Lifting Businesses™, serving a broad range of customers, including manufacturing and process industries, shipyards, ports and terminals. Konecranes provides productivity enhancing lifting solutions as well as services for lifting equipment of all makes. In 2019, Group sales totaled EUR 3.33 billion. Including MHE-Demag, the Group has around 18,000 employees in 50 countries. Konecranes shares are listed on the Nasdaq Helsinki (symbol: KCR).

© 2021 Konecranes. All rights reserved. 'Konecranes', 'Lifting Businesses' and  are either registered trademarks or trademarks of Konecranes.

This publication is for general informational purposes only. Konecranes reserves the right at any time, without notice, to alter or discontinue the products and/or specifications referenced herein. This publication creates no warranty on the part of Konecranes, express or implied, including but not limited to any implied warranty or merchantability or fitness for a particular purpose.

