

THE KONECRANES C-SERIES CRANE

Modern durable lightweight lifting

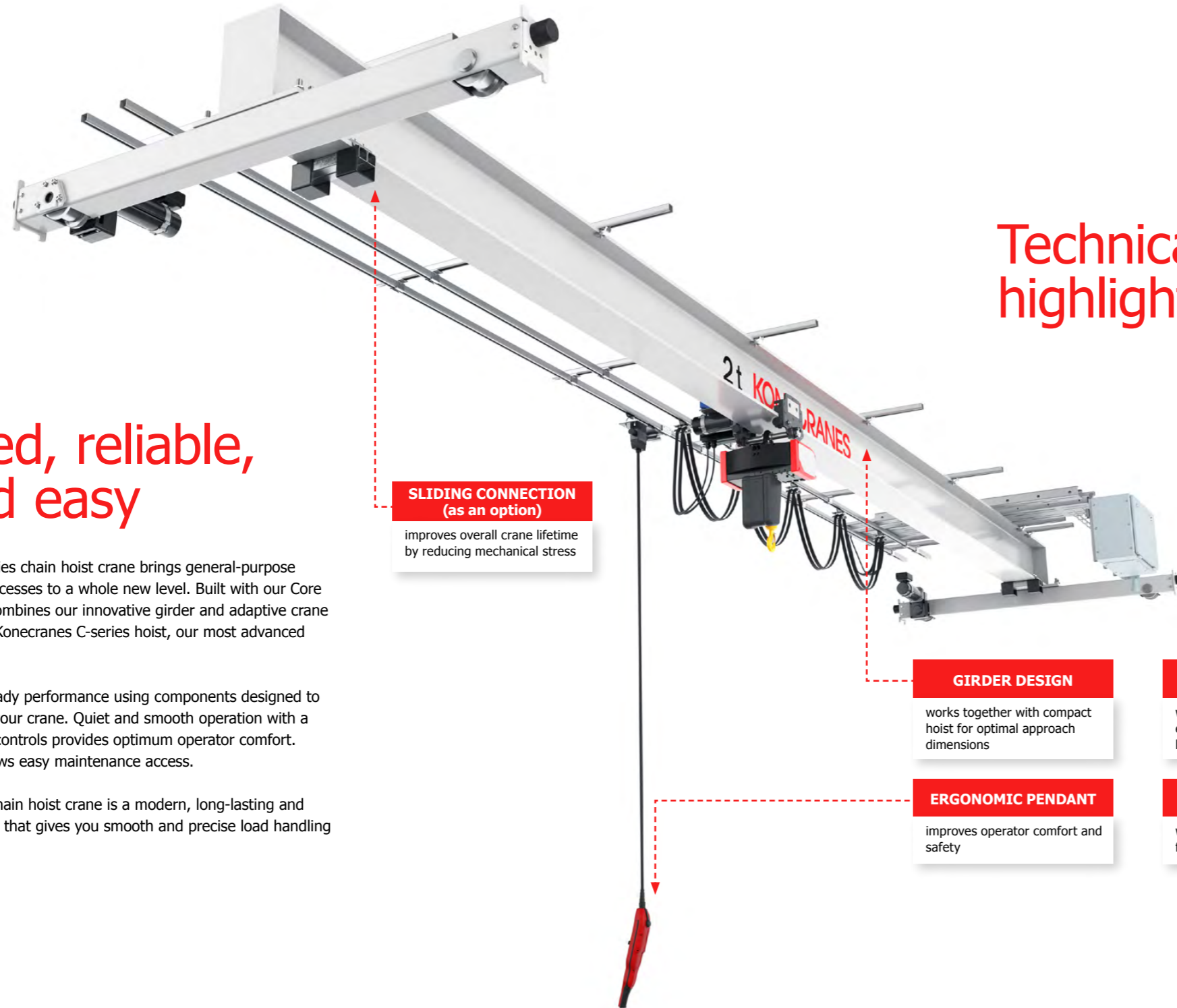


Advanced, reliable, safe and easy

The new Konecranes C-series chain hoist crane brings general-purpose lifting in your everyday processes to a whole new level. Built with our Core of Lifting components, it combines our innovative girder and adaptive crane end truck design with the Konecranes C-series hoist, our most advanced electric chain hoist to date.

Reliability is assured in steady performance using components designed to last the whole lifecycle of your crane. Quiet and smooth operation with a light hook and ergonomic controls provides optimum operator comfort. The modular structure allows easy maintenance access.

The Konecranes C-series chain hoist crane is a modern, long-lasting and dependable lifting machine that gives you smooth and precise load handling up to 5 tons.



Technical highlights

SLIDING CONNECTION (as an option)

improves overall crane lifetime by reducing mechanical stress

GIRDER DESIGN

works together with compact hoist for optimal approach dimensions

ERGONOMIC PENDANT

improves operator comfort and safety

PRECISION GEARS

with lifetime lubrication for enhanced performance and low maintenance

OPERATING LIMIT SWITCH

with protected internal design for enhanced durability

NEW FLEXIBLE TROLLEY

modular design and easily adjustable for a wide range of flange widths

HIGH-QUALITY MOTOR

purpose-built for long-term reliable lifting in demanding conditions

SELF-ADJUSTING BRAKE

designed for long life, reliability and low maintenance

SIMPLE BRACKET DESIGN

for improved flexibility and faster installation

SLIPPING CLUTCH

for outstanding reliability through reduced heat stress

TIGHT SPROCKET PAIRING

reduces friction and wear with smoother chain flow

LIGHT HOOK

with non-slip coating improves operator comfort and safety

Built with state-of-the-art crane technology

Each Konecranes C-series electric chain hoist crane uses the latest technical advances for a modern, durable lifting machine.

Fan cooling brings more power to the motor, allowing you longer continuous operation with a cycling duty factor up to 60% and 300 starts per hour.

Add to that a lifetime lubricated gearbox that improves reliability and raises your productivity with a wide range of lifting speeds and a slipping clutch that protects your operators from dangerous overload.

In addition, the self-adjusting brake will last more than one million operations. It always engages if you lose power.

The design of the chain guide with a tight chain and sprocket pairing gives you smooth chain flow and extends chain life.

You get all of this inside a sleek hoist combined with optimal main girder dimensioning for narrow hook approaches in limited working spaces.



Core of Lifting is our term for the gears, motors and controls and the way they work together. We have designed these in-house, specifically for the lifting motions of cranes.

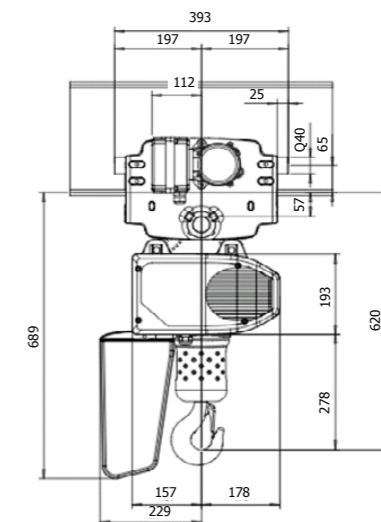


FACTS AT GLANCE

Load range	250 kg – 5000 kg
HOL (meters)	hoists with 1 chain fall, 16 m hoists with 2 chain falls, 10 m
Hoisting speeds (m/min)	4/1, 8/2, 12/3, 16/4
Ambient temperature range	-10°C – +40°C
Environment	indoor use
Hoists on the crane	1 hoist on crane
Crane type	Top running single girder and under running cranes
Crane structure	Profile and box girders (with sliding connection as an option)
Crane controls	Stepless travelling movements
Hoist controls	2-speed or stepless hoisting movements
Hoist power supply	Festoon or energy chain
Max span	Profile girder 19 meters and box girder 22 meters
Voltages	380V – 415V/ 50Hz 440V – 480V/ 60Hz Control voltage 48V and 115V
Crane controller type	Movable pendant, connected to festoon Optional radio controller

COMPARISON BETWEEN C-SERIES HOIST AND TRADITIONAL WIRE ROPE HOIST OUTER DIMENSIONS Crane load 2500 kg and height of lift 9 m

Width of trolley + C-series hoist combination	426 mm
Width of wire rope hoist	760 – 800 mm



Industrial applications

Each industry has its own unique lifting requirements. Some demand more precision, while others need smoother motion. A high duty cycle in a challenging environment is different to occasional lifts. Sometimes available working space is the deciding factor. With a wide range of features and options, the C-series crane suits many different industries in a compact and economical form.



Manufacturing and assembly

Assembly lines consist of several subsequent steps, each requiring its own lifting device. The product moves rapidly from one step to the next as it is put together. Good planning positions cranes carefully above each workstation, using space and time efficiently. Lightweight hooks allow easy manipulation. For example:

Automotive
The 4:1 speed ratio of dual speed hoists or stepless inverters allow fast and precise movement, important in delicate assembly work.

Wood and saw mills
Whether it's small wood blocks or complete building elements, chain hoist cranes make operations easy and accurate with a wide capacity range.

General manufacturing
A C-series crane suits any basic lifting need, especially on production lines with limited space, where its compact size and narrow hook approaches make it ideal.

Processes

Process applications are different to assembly environments. When cranes are used frequently, durability is important. Resistance against humidity, dust and temperature might be necessary. When C-series cranes perform service operations, they are used less, but they need to be reliable and ready at a moment's notice. For example:

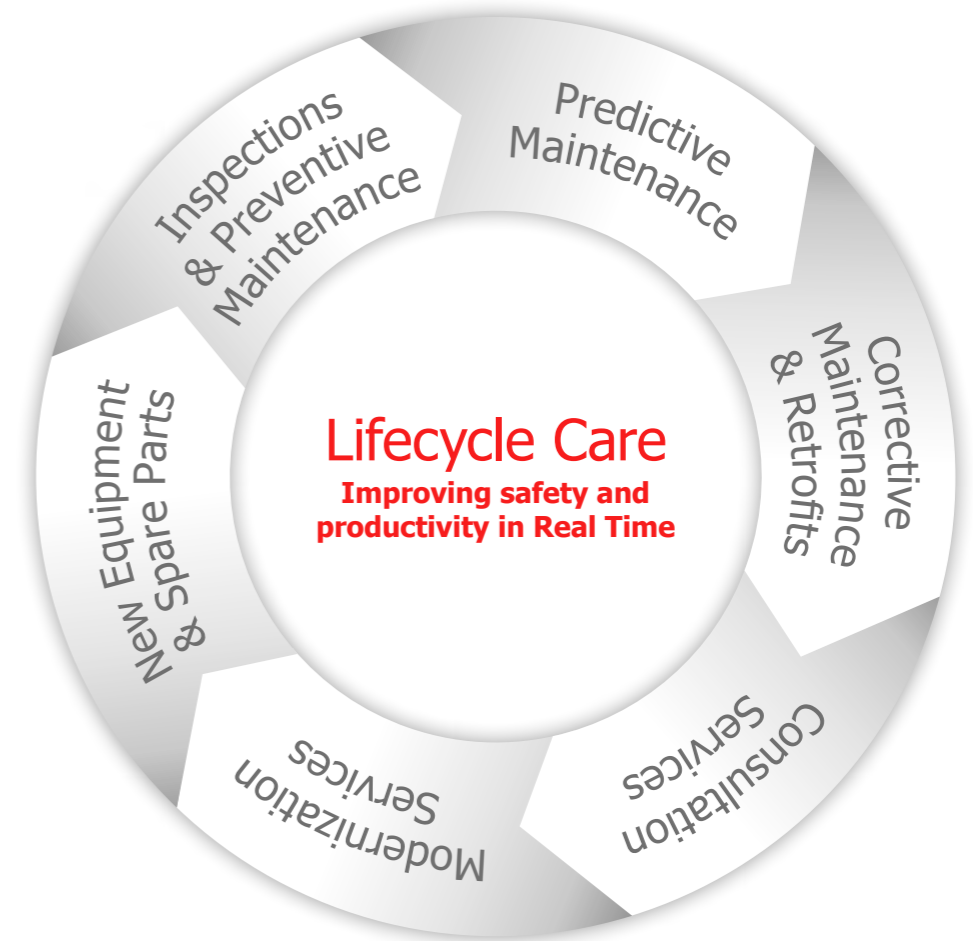
Paper and forest
Making paper can be both dusty and wet because of the wood fibers, water and additives used in the process. Heat dries the end product. Special features added to C-series cranes can handle such conditions easily.

Waste-to-energy
Such processes usually operate 24/7, so any planned or unplanned maintenance must be fast and highly efficient. Maintenance using C-series cranes rely on durable hoist components, always ready to perform when needed.

Comprehensive, systematic and world-class maintenance

An active preventive maintenance program is crucial to improving your safety and productivity. We can tailor a maintenance plan just for you based on your equipment, application and duty cycle. Designed for easy access to all key components, your C-series crane minimizes downtime, even during service.

Konecranes backs up your maintenance plan with our global service network and a complete range of spare parts available for your C-series electric chain hoist crane.



Konecranes is a world-leading group of Lifting Businesses™, serving a broad range of customers, including manufacturing and process industries, shipyards, ports and terminals. Konecranes provides productivity enhancing lifting solutions as well as services for lifting equipment of all makes. In 2019, Group sales totaled EUR 3.33 billion. Including MHE-Demag, the Group has around 18,000 employees in 50 countries. Konecranes shares are listed on the Nasdaq Helsinki (symbol: KCR).

© 2021 Konecranes. All rights reserved. 'Konecranes', 'Lifting Businesses' and  are either registered trademarks or trademarks of Konecranes.

This publication is for general informational purposes only. Konecranes reserves the right at any time, without notice, to alter or discontinue the products and/or specifications referenced herein. This publication creates no warranty on the part of Konecranes, express or implied, including but not limited to any implied warranty or merchantability or fitness for a particular purpose.



CONTACT US TODAY

konecranes.com/contact-us

